

ALUMINUM SUBPANELS FOR FIBERGLASS ENCLOSURES

Designed to mount in the back of an enclosure. Made of marine grade aluminum.

Catalog No.	Height (A)	Width (B)	Edge Flanges	Product Code
SCE-6P4AL	5.00	3.00	Flat	F2
SCE-6P6AL	5.00	5.00	Flat	F2
SCE-8P6AL	7.00	5.00	Flat	F2
SCE-8P8AL	7.00	7.00	Flat	F2
SCE-10P8AL	9.00	7.00	Flat	F2
SCE-12P10AL	11.00	9.00	Flat	F2
SCE-12P12AL	11.00	11.00	Flat	F2
SCE-14P8AL	13.00	7.00	Flat	F2
SCE-14P12AL	13.00	11.00	Flat	F2
SCE-16P10AL	13.00	8.50	Flat	F2
SCE-16P14AL	15.00	13.00	Flat	F2
SCE-18P16AL	16.88	14.88	Flat	F2
SCE-20P16AL	17.00	13.00	Flat	F2
SCE-20PJ16AL	18.88	14.88	Flat	F2
SCE-24P12AL	21.00	9.00	Flat	F2
SCE-24P20AL	21.00	17.00	Four	F2
SCE-24P24PCAL	22.75	22.75	Flat	F2
SCE-30P20AL	27.00	17.00	Four	F2
SCE-30P24AL	27.00	21.00	Four	F2
SCE-36P30AL	33.00	27.00	Four	F2

ELJ CONSOLET SUBPANELS

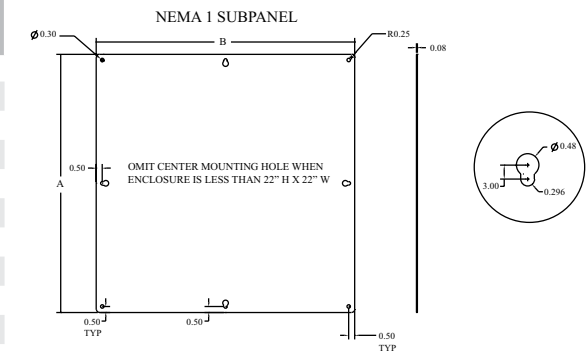
Designed to be used with ELJ Consolets. Made of heavy gauge steel and powder coated white.

Catalog No.	Height (A)	Width (B)	Configuration	Edge Flanges	Product Code
SCE-8P8C	6.00	6.75	A	Flat	P3
SCE-8P12C	6.00	10.75	A	Flat	P3
SCE-8P16C	6.00	14.75	A	Flat	P3
SCE-8P20C	6.00	18.75	A	Flat	P3
SCE-12P12C	9.50	10.75	A	Flat	P3
SCE-12P16C	9.50	14.75	A	Flat	P3
SCE-12P20C	9.50	18.75	A	Flat	P3
SCE-12P24C	9.50	22.75	A	Flat	P3
SCE-16P20C	12.88	18.75	A	Flat	P3
SCE-16P24C	12.88	22.75	A	Flat	P3
SCE-16P30C	12.88	28.75	A	Flat	P3
SCE-20P20C	16.38	18.75	A	Flat	P3
SCE-20P24C	16.38	22.75	A	Flat	P3
SCE-20P30C	16.38	28.75	A	Flat	P3

TYPE I SUBPANELS

Designed to be used with Nema 1 enclosures. Made of heavy gauge steel and powder coated white.

Catalog No.	Height (A)	Width (B)	Edge Flanges	Product Code
SCE-6N6MP	4.00	4.00	Flat	N1
SCE-8N6MP	6.00	4.00	Flat	N1
SCE-8N8MP	6.00	6.00	Flat	N1
SCE-10N8MP	8.00	6.00	Flat	N1
SCE-10N10MP	8.00	8.00	Flat	N1
SCE-12N10MP	10.00	8.00	Flat	N1
SCE-12N12MP	10.00	10.00	Flat	N1
SCE-14N12MP	12.00	10.00	Flat	N1
SCE-16N12MP	14.00	10.00	Flat	N1
SCE-16N16MP	14.00	14.00	Flat	N1
SCE-20N16MP	18.00	14.00	Flat	N1
SCE-20N20MP	18.00	18.00	Flat	N1
SCE-24N16MP	22.00	14.00	Flat	N1
SCE-24N20MP	22.00	18.00	Flat	N1
SCE-24N24MP	22.00	22.00	Flat	N1
SCE-30N24MP	28.00	22.00	Flat	N1
SCE-30N30MP	28.00	28.00	Flat	N1
SCE-36N24MP	34.00	22.00	Flat	N1
SCE-36N30MP	34.00	28.00	Flat	N1



FILLER PLATES

Designed to provide additional mounting surface between subpanels in a large enclosure or between subpanels or sections of a modular enclosure. Slotted mounting holes allow flexible installation. Panels are powder coated white.

Catalog No.	Height (D)	Width	Enclosure Height	Edge Flanges	Product Code
SCE-72FP	60.00	9.75	72.00	Flat	P3
SCE-72FPGALV	60.00	9.75	72.00	Flat	P3
SCE-84FP	72.00	9.75	84.00	Flat	P3
SCE-84FPGALV	72.00	9.75	84.00	Flat	P3
SCE-90FP	78.00	9.75	90.00	Flat	P3

